

# Delta Conveyance Project

Modernizing California's Water Infrastructure | 2024



## Fast Facts

### WATER SUPPLY RELIABILITY

The Delta Conveyance Project protects against future water supply losses caused by climate driven weather extremes, sea level rise and earthquakes. It will help the State Water Project (SWP) safely capture, move and store water from big, but infrequent, storm events.



Climate change means more rain in the winter and more runoff and river flows than before.



According to the United States Geological Survey there is a **72% chance of a 6.7 or greater magnitude earthquake** occurring in the Bay Area by 2043 that could cause levees in the Delta to fail, crippling the state's ability to deliver clean water.



Significant sea level rise predicted by **2100**.



Sierra snowpack, the state's largest source of surface water, will be reduced by **65%** on average by century's end.

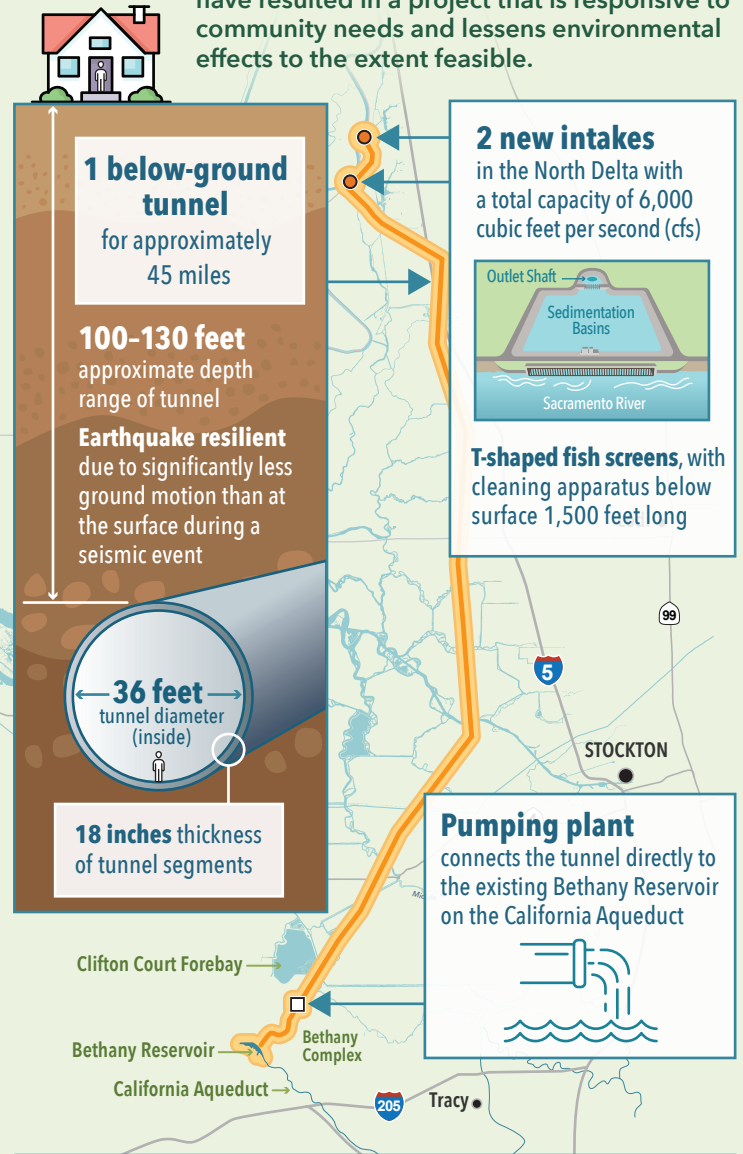
### MISSED OPPORTUNITY

If the Delta Conveyance Project was operational during the big winter storms of winter 2021-2022, January 1 through June 13, 2024, a significant amount of water could have been captured and moved.

Winter 2021-2022	January 2023	Jan 1-June 13, 2024
<b>Amount of water that could have been captured:</b>		
<b>236,000</b> acre-feet	<b>228,000</b> acre-feet	<b>941,000</b> acre-feet
<b>That's enough water to supply:</b>		
Over <b>2.5 million</b> people for one year	Over <b>2.3 million</b> people for one year	Over <b>9.8 million</b> people for one year
or		
Nearly <b>850,000</b> households for one year	Nearly <b>800,000</b> households for one year	Nearly <b>3.3 million</b> households for one year
<b>Percent of the total volume of water exported by the SWP per year</b>		
<b>45%</b> water year 2021	<b>40%</b> water year 2022	<b>95%</b> 2024 exports

### MODERNIZED WATER INFRASTRUCTURE

Use of design and engineering innovations have resulted in a project that is responsive to community needs and lessens environmental effects to the extent feasible.



Facilities designed to withstand **200 year flood event** on top of **10.2 feet of sea level rise**



Project construction will create over **5,000 good-paying jobs** at the peak



# Delta Conveyance Project

Modernizing California's Water Infrastructure | 2024



## IMPORTANT WATER SUPPLY

The [State Water Project](#) is an important water supply for California that can't be replaced.



### 27 MILLION PEOPLE

receive clean, safe and affordable water from the SWP, including nearly 7 million disadvantaged community members



### 750,000 ACRES OF FARMLAND

are irrigated with SWP water



Water supplied by the SWP sustains the world's **FIFTH LARGEST ECONOMY**



**2/3** of California's water originates in the **SIERRA NEVADA MOUNTAINS**



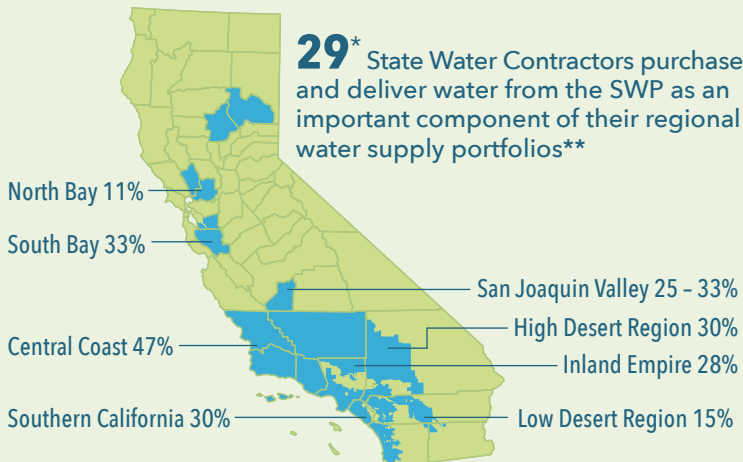
**50%** of California's water supply flows through the Delta and is delivered to **3 OUT OF 5 CALIFORNIANS**



**\$400** billion in contributions to California's economy by SWP water



**Important foundation** for local water supply projects, including groundwater recharge, recycling, storage and others



\*Of the 29 State Water Contractors, 18 are currently participating in the Delta Conveyance Project  
\*\*Percentages represent regional water supplies dependent on reliable Delta infrastructure

## EXTENSIVE PUBLIC INPUT



### Environmental Review

**142-day** comment period, where **729 letters** and other communications totaling **7,300 individual comments** were received



### Community Benefits Program

Acknowledge and address the reality that project impacts are local to the Delta, but direct project benefits accrue to other parts of the state

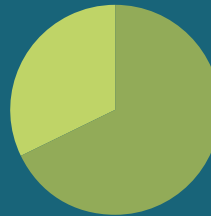


### Community Engagement

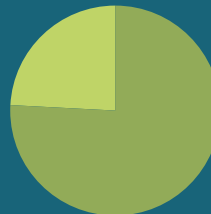
Engaged with Delta communities to hear their ideas and concerns through a **Stakeholder Engagement Committee** comprised of Delta residents, business owners and other stakeholders, and an [Environmental Justice community survey](#)

## SUPPORT FOR MODERNIZING WATER INFRASTRUCTURE

The public is highly concerned about the condition of state and local water infrastructure and a [recent poll](#) shows voters strongly support increased funding for water-related infrastructure and are extremely supportive of building a new tunnel.



**68%** of California voters rate the "condition of state and local water supply infrastructure like reservoirs, dams, canals, sewers and storm drains" as an extremely or very serious problem



**76%** of voters support building a new tunnel underneath the Sacramento-San Joaquin Delta to upgrade California's primary water delivery infrastructure

